

- ANTI-FATIGUE MATTING -

- Heavy-Duty construction • Beveled edges provide added safety
- Reduces back fatigue and stress

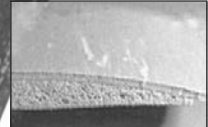
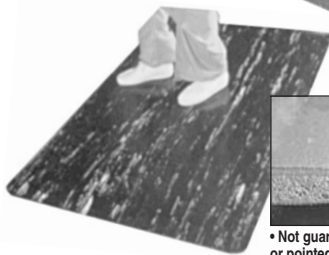
Colors: Tan, Brown, Charcoal, Black, Gray, Blue



7/8" THICKNESS

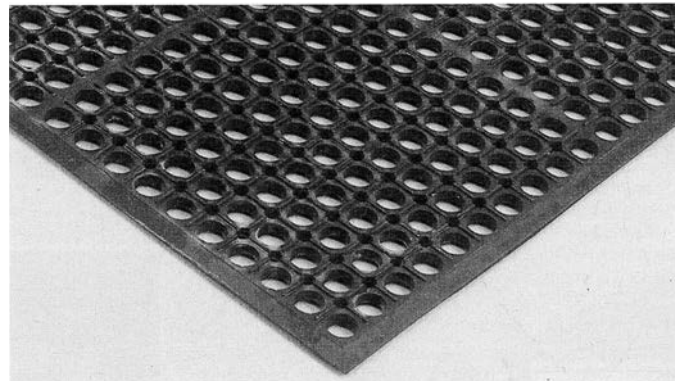
Description	Item No.	Price ea.	Item No.	Price Ea.
Tile-top Mat	24x36"	H297T		
			23TT	\$79.00
	36x60"	H298T		
			35TT	\$179.00
Description	Width	Item No.	Linear Foot	
Cut to Length	24"	H299T		260
				\$1,095
Matting	36"	H300T		360
				\$1,599

7/8" Thick Colors: Black, Blue, Charcoal, Gray



Durable and practical matting with marbled surface is attractive in all settings. 3/8" rubber tile surface bonded to 3/8" sponge base. 1/2" overall thickness.

• Not guaranteed against damage from spiked heels, casters, or pointed stool legs.

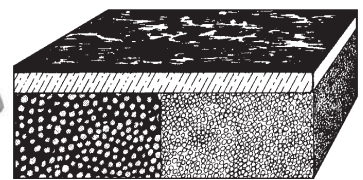
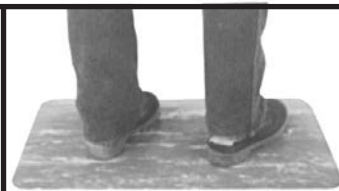


Drainage Mats

- For wet, dry, and moderately greasy areas • 1/2" thick • Color Black
- All-purpose rubber construction
- Beveled edges on four sides

Spills pass directly through drainage holes, keeping workers' feet dry. Resilient rubber mats provide cushioned support and are lightweight for easy handling and cleaning.

Stock No.	Size	Net Ea.
43780	36x60"	\$69.90
43797	36x120"	159.99
43799	36x240"	299.00



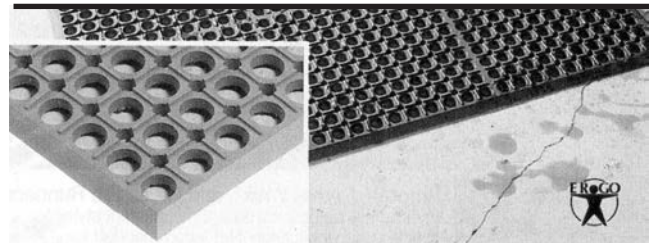
Low Density High Density

Ergo-Stance Mat

Two-density sponge base subtly shifts worker's weight from leg to leg—helps stimulate blood flow. Offers relief from foot and leg disorders that can result from long periods of standing on hard surfaces. 1/2" thick. Beveled safety edges.

Stock No.	Size	Lbs.	Net Ea.
SMOOTH RUBBER SURFACE. Marble pattern.			
Specify Color: 18 blue, 27 gray, 29 black.			
798	24"x36"	12	\$69.98
208	36"x60"	30	179.99

CUSTOM CUT lengths available.



Light Grease-Proof Mats

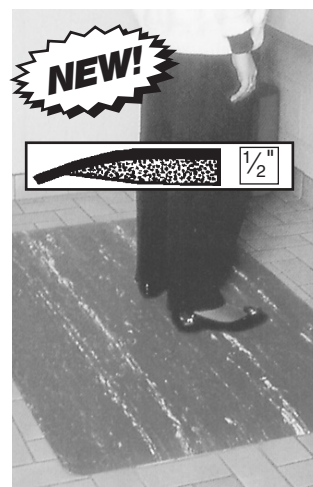
- Place in any wet, dry, greasy areas or where mineral-oil based cutting fluids are found • 1/2" thick • Color Gray
- Grease-proof rubber construction

Hygienic drainage mats are constructed of a unique compound that is resistant to mineral oil based cutting fluids as well as most chemicals, impervious to grease, cooling oils, animal fats, and renderings. Spills pass right through — feet stay dry. Easy to keep clean. Beveled edges. 2-year warranty.

Stock No.	Size	Wt. Lbs.	Net Ea.
43806	3x5'	25	\$89.90
43805	3x10'	50	212.90
43807	3x20'	100	373.50

VINYL TOP SPONGE

A new version of an old favorite



Its marbled surface is a durable vinyl, perfect for use in laboratories, and areas where chemical resistance is a priority. Works well in high traffic settings. The super comfortable sponge base reduces standing worker fatigue and increases morale. 1/2" thick with safety beveled edges.

Specify color suffix: (BK) Black, (BL) Blue, (GY) Gray, (SA) Sandalwood.

L' x W'	Model	Price Each
STOCK SIZES		
2 x 3	6840	\$59.99
3 x 5	6841	149.25

FULL 60' ROLLS		
2	6842	\$1,092.00
3	6843	1,663.00
4	6844	2,139.00

CUSTOM CUTS available.

C-Thru Storage Cabinets

C-Thru Storage Cabinets are the perfect solution for viewing contents of cabinets without violating people's privacy in schools, industrial applications, airports, healthcare, prisons and more where concealed belongings need to be scrutinized. You'll find the C-Thru option convenient for locating materials while meeting your security needs. Choose between Standard and Deluxe cabinets.

Please Note

Standard Colors: Black, Light Grey, Medium Grey, Champagne/Putty and Sand.

Quick Ship Colors: Black, Light Grey, Medium Grey, Champagne/Putty and Sand.

***Make it Mobile, Add Caster Kit!**

- E-Z Cleaning
- Keep Above Wet Floor



C-Thru Storage Cabinet



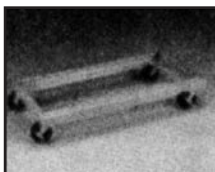
C-Thru Combination Cabinet



C-Thru Wardrobe Cabinet



C-Thru Counter-Height Cabinet



*Caster Kit

Add mobility to Standard cabinets. Perfect for offices and other areas where materials need to be secured yet accessible to workers at all different locations. Add 6-3/4" to cabinet height.

Mobile Storage Cabinet

Caster Kit for Storage Cabinets

Cat. No.	W	D	H	Wt.	List Price
CK18	36"	18"	6-3/4"	21	\$96.00
CK24	36"	24"	6-3/4"	22	98.00
CK48	48"	24"	6-3/4"	23	107.00

* "KD" indicates unassembled unit; "WSU" indicates welded, set-up unit

** Shelves are packed 1 per carton

National Motor Freight classification; Set Up Class 125, KD Class 70

Cat. No.	Grade	No. of Openings	W	D	H	Type*	Wt.	List Price
Storage Cabinets								
CVD1470	Standard	5	36"	18"	72"	KD	113	\$529.00
CVD1480	Standard	5	36"	24"	72"	KD	136	536.00
CVD7218	Standard	5	36"	18"	72"	WSU	129	514.00
CVD7224	Standard	5	36"	24"	72"	WSU	149	608.00
CVD1870	Deluxe	5	36"	18"	78"	KD	154	593.00
CVD2470	Deluxe	5	36"	24"	78"	KD	183	659.00
CVD7818	Deluxe	5	36"	18"	78"	WSU	152	676.00
CVD7824	Deluxe	5	36"	24"	78"	WSU	194	741.00
CVJ7842SU	Deluxe	5	48"	24"	78"	WSU	230	925.00
CVJ7842K	Deluxe	5	48"	24"	78"	KD	215	767.00
Wardrobe Cabinets								
CVD1471	Standard	2	36"	18"	72"	KD	99	\$435.00
CVD7114	Standard	2	36"	18"	72"	WSU	111	491.00
CVD1871	Deluxe	2	36"	18"	78"	KD	140	547.00
CVD2471	Deluxe	2	36"	18"	78"	KD	155	588.000
CVD7818W	Deluxe	2	36"	18"	78"	WSU	147	631.00
CVD7824W	Deluxe	2	36"	24"	78"	WSU	154	681.00
Extra Shelves								
301 **			36"	18"	3/4"		8.3	\$19.00
302 **			36"	24"	3/4"		11.7	29.00
Combination Cabinets								
CVD1471	Standard	7	36"	18"	72"	KD	112	\$496.00
CVD7214	Standard	7	36"	18"	72"	WSU	132	556.00
CVD7220	Standard	7	36"	24"	72"	WSU	155	625.00
CVD1872	Deluxe	7	36"	18"	78"	KD	152	624.00
CVD2472	Deluxe	7	36"	24"	78"	KD	181	682.00
CVD7814	Deluxe	7	36"	18"	78"	wsu	160	755.00
CVD7820	Deluxe	7	36"	18"	78"	WSU	192	802.00
Extra Shelves								
304 **			18"	18"	3/4"		5.5	\$14.20
305 **			18"	24"	3/4"		7.3	16.80
Counter Height Cabinets								
CVD1442	Standard	3	36"	18"	42"	KD	69	\$330.00
CVD4218	Standard	3	36"	24"	42"	WSU	81	373.00
CVD1842	Deluxe	3	36"	18"	42"	KD	90	423.00
CVD2442	Deluxe	3	36"	24"	42"	KD	103	449.00
Extra Shelves								
301 **			36"	18"	3/4"		5.5	\$19.10
302 **			36"	23"	3/4"		11.7	29.00
307"			48"	24"	3/4"		14	39.00

EDGE CO • P.O. Box 338 • Little Ferry, N.J. 07643 • (201) 945-5660 • Fax (201) 945-5966

Toll Free 1-800-833-4326 or 1-800-8-EDGE CO Additional NEW Products Are At: edgecoamerica.com

Stainless Steel Workbenches

- 18 gauge 430 series stainless steel top, 35"H
- Work surface has 2 heavy gauge channel supports for added stability
- 2"H backsplash. Hemmed safety edges. Galvanized lower shelf is fully adjustable.
- Tubular legs are 1-5/8" diameter with 1" adjustable leveling feet
- Optional casters for mobility. Optional drawers measure 15"W x 20"D x 5"H



Description	Model	Unit Price	Wt. Lbs.
24"W x 24"D 18 Gauge with Undershef	2424SS	\$200.00.	37
48"W x 24"D 18 Gauge with Undershef	4824SS	\$250.00.	55
60"W x 30"D 18 Gauge with Undershef	6030SS	\$300.00.	77
72"W x 30"D 18 Gauge with Undershef	7230SS	\$375.00.	88
96"W x 30"D 18 Gauge with Undershef	9630SS	\$525.00.	118
48"W x 24"D 18 Gauge with Undershef & Backsplash	4824BSS	\$275.00.	55
60"W x 30"D 18 Gauge with Undershef & Backsplash	6030BSS	\$325.00.	77
72"W x 30"D 18 Gauge with Undershef & Backsplash	7230BSS	\$400.00.	88
96"W x 30"D 18 Gauge with Undershef & Backsplash	9630BSS	\$550.00.	118

WIRE CAGE PLATFORM TRUCKS



Fold-Down Sides
for Easy Access

#0456

- Steel wire cage - 21" high
- 1,100-lb. capacity (#0461)
- 660-lb. capacity (#0456)
- 8" (#0461) and 5" (#0456) mold-on thermoplastic rubber casters
- Ships UPS



Cart Covers

#0456CC\$89
#0461CC\$89

Model No.	Dimensions	Price
0456	35"L x 23"W overall 36"H	\$419.99



Removable
Non-Folding
Sides

#0461
Easy Assembly

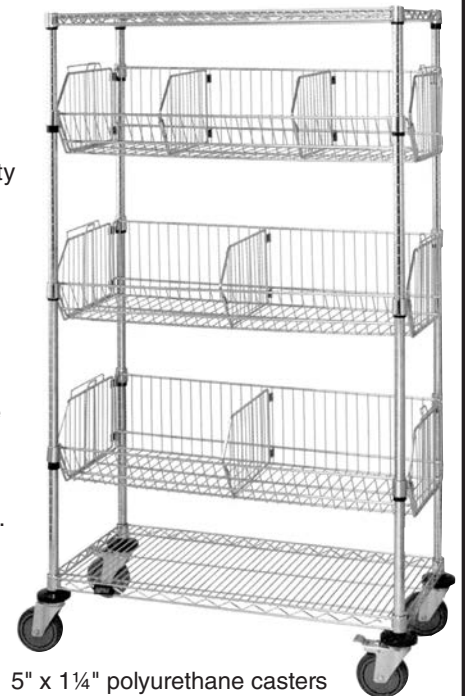
Prevent packages, supplies and equipment from falling during transport. Sides are removable, allowing for easy access to contents. Also features powder-coated platform and handles and a zinc-plated cage.

Model No.	Dimensions	Price
0461	48"L x 30"W overall 40"H	\$599.99



Basket Storage Units

Baskets allow high visibility and air circulation. This basket design acts as a dispensing & storage module which can be added to 18", 21" and 24" deep shelving units. The collar hook allows the basket to be removed or adjusted to accommodate various product mix and sizes. Each unit includes 3 adjustable baskets, 2 shelves and 4-63"H posts. (Note: Dividers sold separately). Finish: Chrome.
Mobile - 69"
Stationary - 63"



5" x 1 1/4" polyurethane casters

DIMENSIONS	MOBILE	SHIP WGT.	PRICE	STATIONARY	SHIP	PRICE
W" x L" x H"	MODEL NO.			MODEL NO.	WGT.	
18" x 36" x 69"	M1836BC6C	78 lbs.	\$315	1836BC6C	70 lbs.	\$258
18" x 48" x 69"	M1848BC6C	90 lbs.	375	1848BC6C	82 lbs.	299
24" x 36" x 69"	M2436BC6C	93 lbs.	379	2436BC6C	85 lbs.	304
24" x 48" x 69"	M2448BC6C	108 lbs.	406	2448BC6C	100 lbs.	331
Dividers.....						\$7.95 ea.